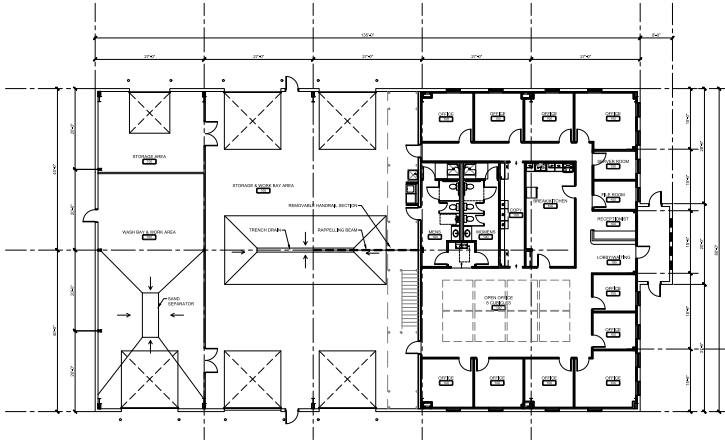


Commercial

# HAZ-MAT Response



## Speed of Lightning

Ayars & Ayars, Inc. was excited to be selected by HAZ-MAT Response to construct their newest facility in Gretna, Nebraska. This Butler Pre-Engineered Metal building will allow for the company to continue their service to the Lincoln and Omaha areas in the event of a hazardous waste situation. This new location will shorten the amount of time it will take to respond to calls. The 10,800 sq. ft. building will also serve as an office space for the company. Our scopes of work for the project include site work, concrete, metal and carpentry.

## Project Details



Location:  
Gretna, Nebraska



Size:  
10,800 sq. ft.



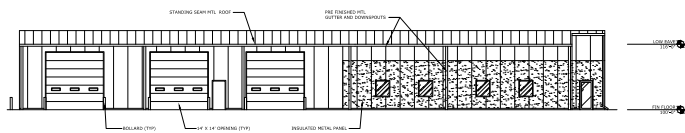
Type of Construction:  
Pre-Engineered Metal



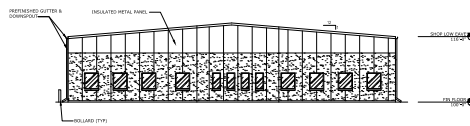
Project Completion:  
Fall 2018



HAZ-MAT Response, Inc. provides direct response from offices located in Kansas, Nebraska, Colorado, and Iowa



WEST ELEVATION  
SCALE: 1/8" = 1'-0"



SOUTH ELEVATION  
SCALE: 1/8" = 1'-0"