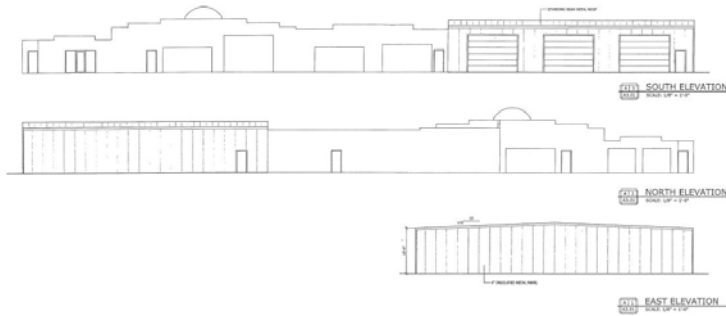


Commercial

Heppner's Auto Body

Expanding Business

When Heppner's Auto Body in Woodbury, Minnesota was running low on space, they called on Ayars & Ayars, Inc. to come up with a fix. This project includes selective demolition of interior walls, replacing a portion of the existing roof, and a 7,227 sq. ft. Butler Pre-Engineered Metal Building addition. Once complete, Heppner's will be able to utilize two brand new paint booths, along with extra space to execute day-to-day operations.



Project Details

➤ Location:
Woodbury, Minnesota

➤ Size:
7,227 sq. ft.

➤ Type of Construction:
Pre-Engineered Metal Building

➤ Project Completion:
Winter 2018

➤ At Heppner's, Quality is never an accident

