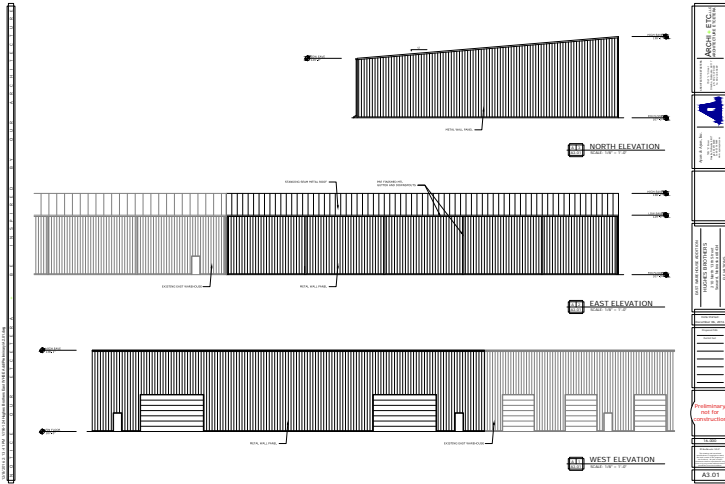


Industrial

Hughes Brothers Warehouse Addition



Twice the Fun

Ayars & Ayars, Inc. continues to strengthen their relationship with Hughes Brothers. Back in 2013, we completed a project to add a 20,000 sq. ft. warehouse space to their campus. When Hughes Brothers ran out of space within this building and needed to expand, it was only natural they called us. This 15,000 sq. ft. addition will almost double the size of the East Warehouse and allow the proper amount of space that is needed. Our scope of work for this project includes site work, concrete and metals. We are proud of our large number of clients with whom we have completed multiple projects – Hughes Brothers is a prime example.

Project Details

- Location:
Seward, Nebraska
- Size:
15,000 sq. ft.
- Type of Construction:
Pre-Engineered Metal Building
- Project Schedule:
Summer 2017
- We ensure that every product meets industry standards that support quality and reliability.

