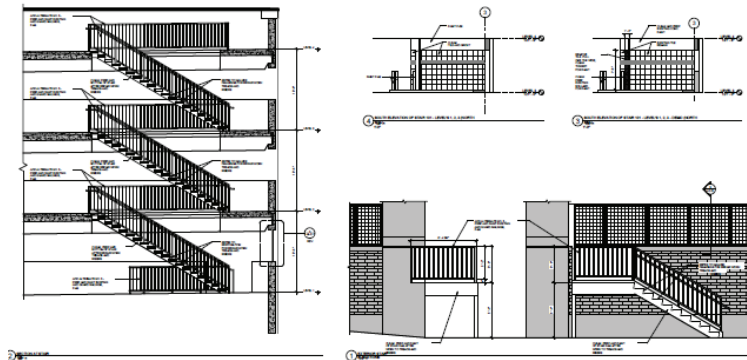


Commercial

Lifetime Fitness Ramp Restoration

Restored Functions

Lifetime Fitness chose Ayars & Ayars, Inc. to make some upgrades to their current St. Louis Park, Minnesota fitness facility. One aspect of this project includes upgrades to the parking ramp. These upgrades include pressure washing, replacing the existing caulking, and resealing the entire parking ramp. We will also repaint the outdated, first floor metal screens and staircases. The final stage of the project will include installation of new floor drains, and brick veneer on the top level stairway enclosure.



Project Details

➤ Location:
St. Louis Park, Minnesota

➤ Size:
40,000 sq. ft.

➤ Type of Construction:
Special Projects Group

➤ Project Completion:
TBD

➤ Life Time is a privately held, health and lifestyle company that offers a personalized and scientific approach to long-term health and wellness.

